



iManage

Making knowledge work

The future of work
is better together

**How to deliver the
modern workplace**



Clinging to traditional ways of doing business is a barrier to knowledge work organizations as they seek to get ahead amidst economic uncertainties, pandemic-driven realities, and fierce competition for talent. Succeeding in this environment requires embracing a truly modern workplace.



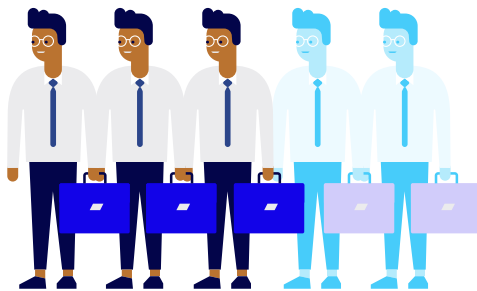
Global spending on digital transformation will reach



in 2025 – **more than double the spending** in 2020.



of executives say digital transformation is their **most critical growth driver** in 2022.



Digital transformation

Organizations that embark on a digital transformation initiative are changing the way they conduct business, achieving better results for themselves and their customers – and driving the growing trend toward new investments in digital transformation.

Azure as a platform

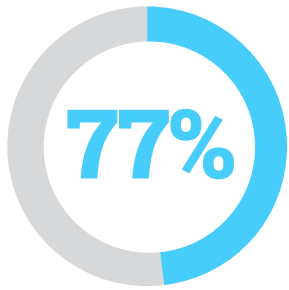
Leveraging Microsoft Azure, iManage Cloud empowers your organization with a secure, reliable, and resilient platform on a global scale.

- Data sovereignty for improved regulatory compliance and quick access while maintaining data in-region
- Geo-protection to ensure data resides within geographic boundaries but is accessible for authorized use
- Single comprehensive view of information for a specific client, matter, or project, regardless of where content is saved around the world
- Coordination of knowledge work among distributed teams
- Resilient and highly available platform has multiple layers of redundant infrastructure to deliver continuous and scalable services for critical business applications with 99.99% uptime
- Global network of datacenters to meet the needs of every business, everywhere

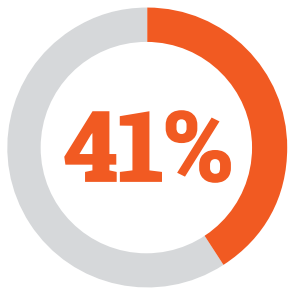
About iManage™

iManage is the company dedicated to Making Knowledge Work™. Its intelligent, cloud-enabled, secure knowledge work platform enables organizations to uncover and activate the knowledge that exists inside their business content and communications. Advanced artificial intelligence and powerful document and email management create connections across data, systems, and people while leveraging the context of organizational content to fuel deep insights, informed business decisions, and collaboration.

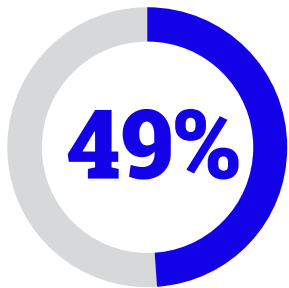
Underpinned by best-of-breed security and sophisticated workflows and governance approaches, iManage has earned its place as the industry standard by continually innovating to solve complex professional challenges and enabling better business outcomes for over one million professionals across 65+ countries.



of employees want flexible remote working options to stay



of employees are considering leaving their current employer this year



of digital workers* are likely to leave their job because they are frustrated with workplace technology

Remote and hybrid working

Since the COVID-19 pandemic forced office closures, many employees have embraced the idea of working from home at least part of the time. And, with strong competition for talent, organizations that refuse to invest in the right technology to optimize hybrid working are likely to find themselves at a disadvantage.

Seamless user experiences

Enhanced integrations between iManage and Microsoft offer easier collaboration, enhanced user experience, and greater productivity.

- Seamless interoperability with Office and Teams for improved productivity within the workspaces users need most often
- Co-authoring mode for simplified collaboration and editing of documents
- Integration with Microsoft Teams for efficient communication and collaboration while retaining iManage document security and governance protections
- Capability to work productively from anywhere while remaining secure

How iManage helps you make knowledge work

iManage is dedicated to making knowledge work by enabling organizations to uncover and activate the knowledge that exists inside their business content and communications.

We're committed to helping you and your business make knowledge work in four core ways:



Create

Find and create value inside your organization and activate your expertise.



Collaborate

Connect and share safely anywhere and eliminate friction to make faster, better decisions.



Protect

Manage and protect the IP under your care by embedding governance security into your workflows.



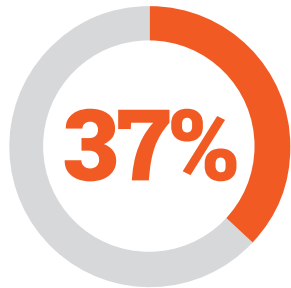
Innovate

Innovate with confidence in our ecosystem of partners and integrations.

* defined as those who work on a computer and collaborate with others.



of UK law firms see cyber-risk as the biggest threat to their future growth and ambition



of respondents to a Sophos survey of mid-sized organizations were hit by ransomware in the last year

In the first six months of 2021, FinCen (US) identified **\$590 million** in ransomware-related Suspicious Activity Reports (SARs), compared to a total of **\$416 million** for all of 2020—an increase of

42%



Data security

Protecting internal and client data must be a top priority for every organization. Security threats are a reality for organizations of all sizes and are growing year over year. A successful modern workplace acknowledges the risks and takes every opportunity to protect themselves and their clients.

Advanced security and access

iManage and Microsoft together offer superior data security, creating a safe place to work.

- Increased ability to manage, govern, and audit content and all actions around it
- iManage protection for content in Microsoft products like Teams and SharePoint to enable secure, cross-business knowledge sharing
- Comprehensive, pervasive, and unobtrusive security to ensure no user action is required to enjoy the highest levels of protection
- Industry-leading security protections that build on Microsoft's Azure platform augmented with iManage need-to-know security, ethical walls protections, and active threat detection



"We were able to design a highly available system [with Work on Microsoft Azure]. Being able to be productive when you need to be productive in Work in the Cloud, where we do about 90% of our revenue-generating work, is absolutely critical."

– **Warren Hero**, CIO, Webber Wentzel

"We are pleased to be working with iManage and to tap into their expertise gained over more than two decades of delivering work productivity solutions in highly regulated industries. Working together helps us deliver on new opportunities that benefit from the full value of Microsoft Azure and Microsoft solutions with the strength and utility of iManage to help customers work better in the cloud"

– **Tyler Bryson**, Corporate Vice President, US One Commercial Partner, Microsoft

A modern workplace with iManage and Microsoft

To meet the demands of the evolving modern workplace, iManage has made a strategic partnership with Microsoft. This partnership connects the leading-edge cloud computing of Microsoft with the world-class productivity, collaboration, and security capabilities of iManage – all seamlessly integrated into the applications knowledge workers use every day.

Aligned product innovation

iManage and Microsoft working together means faster access to product innovation for our customers, extending the value of your investment.

- The combined power of the iManage and Microsoft research & development and product groups
- Close alignment on product roadmaps and go-to-market activities
- Leveraging of iManage and Microsoft's respective expertise and capabilities
- Customer access to the latest communities, briefings, and events along with an ever-growing partner ecosystem

Better together

iManage and Microsoft are better together. Our partnership offers knowledge workers a modern work experience backed by industry-leading security. With iManage and Microsoft, your organization is ready for the present and future of work. [Learn more about what our partnership can do for your organization.](#)

Trusted by...

 **Tanenbaum Keale LLP**
A Litigation Boutique Serving Global Companies

WEBBER WENTZEL

in alliance with > **Linklaters**


HUFF POWELL BAILEY

Related products

[iManage Work](#)

[iManage Cloud](#)