

AI-powered deals, from first document to final signature



Great deals don't close because of great logistics. They close because deal teams stay focused on what matters. iManage Closing Folders uses artificial intelligence (AI) to handle the rest.

The logistics that slow deals down

Building a transaction checklist from source documents is time-consuming and error-prone. Tracking down signature pages and correctly identifying every signatory across complex, multi-party agreements introduces risk at exactly the moment deals are most sensitive. These aren't edge cases; they're the routine friction that delays closings and pulls deal teams away from the work that counts.

AI that automatically handles setup and signatures



AI-driven agenda/checklist importer

Build complete transaction agendas in minutes, directly from your source documents.

- Reads your documents and presents a structured preview for review and editing before import
- Automatically extracts responsible parties from the source document
- Suggests custom columns that match the original document format
- Cleans and normalizes item and category numbering, every time



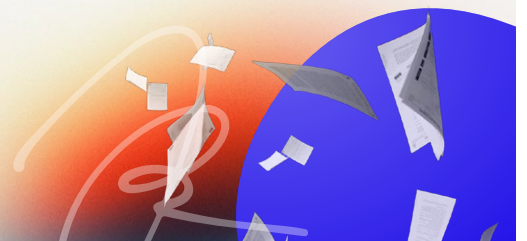
AI-powered advanced signature detection

Identify signature pages, populate signatories, and place signing tabs automatically.

- Detects signature pages across complex documents with improved accuracy
- Automatically recognizes signatories directly from signature pages and adds them to the Signatories page
- Places colored signing tabs on the correct signing line for DocuSign and Adobe Acrobat Sign
- Redesigned signing interface effortlessly guides users through the workflow, with page thumbnails, zoom controls, and filtering for large documents



iManage Closing Folders is powerful, user-friendly, and comprehensive. Its intuitive interface makes it easy to navigate and saves time.





Why deal teams trust Closing Folders

Closing Folders brings AI to deal teams, empowering them to deliver outcomes faster, with fewer errors and full confidence at every stage.

- **Faster setup:** Build agendas in minutes rather than hours, with no specialist help required.
- **Greater accuracy:** AI reduces missed or mislabeled items and misidentified signatures across complex documents.
- **Higher confidence:** Preview and edit before committing – because your team controls the final output.
- **Less manual work:** Responsible parties and signatories are detected and populated automatically, removing repetitive data entry.
- **Scales with complexity:** Handles large, multi-party transactions without additional effort or time.

Built into the product you already use

Closing Folders is trusted by some of the world's most sophisticated organizations to manage their most important transactions. These AI capabilities are available now; no new tools, no specialist onboarding, and no workflow disruption. Whether you're managing a financing, an acquisition, or a complex restructuring, Closing Folders is putting AI to work for you.

16K monthly transactions

5,000+ monthly active users worldwide

4.8★ Capterra rating

96% report faster, better closings

83% report delivering stronger client service



Closing Folders has improved the engagement between junior and senior lawyers which helps us deliver the top tier quality our clients expect.

Jake Irwin

Partner, McCarthy Tétrault LLP

Let's talk about how iManage Closing Folders can streamline your next placement: imanager.com/products/closing-folders